

ORGANISATION CHART

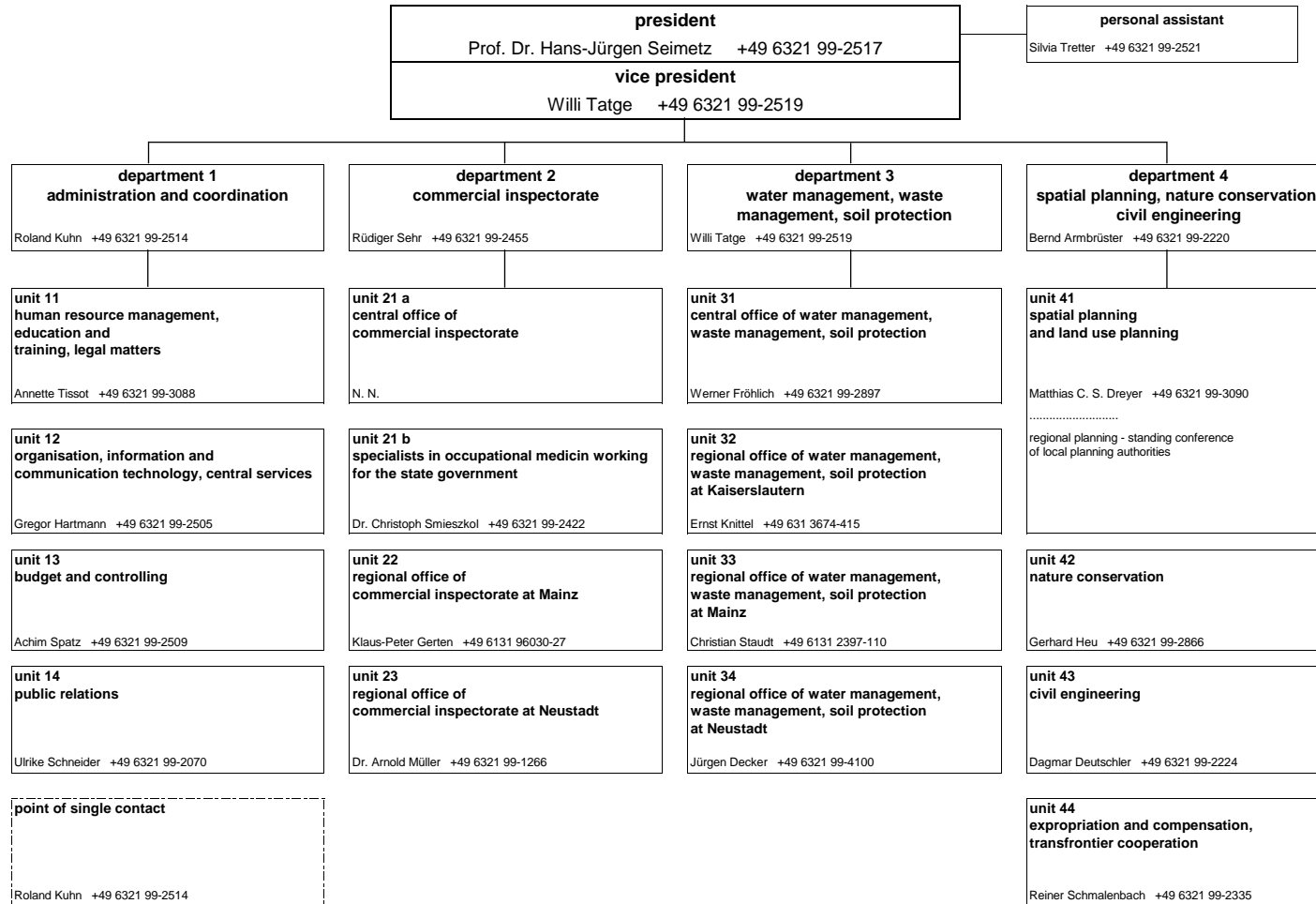
Struktur- und Genehmigungsdirektion Süd
 Friedrich-Ebert-Strasse 14
 67433 Neustadt an der Weinstrasse
 Phone: +49 6321 99-0
 Fax: +49 6321 99-2900
 poststelle@sgdsued.rlp.de
 www.sgdsued.rlp.de

Updated: 6 January 2015



Rheinland-Pfalz

STRUKTUR- UND
 GENEHMIGUNGSDIREKTION
 SÜD



location
Neustadt an der Weinstrasse:
 department 1,
 department 2 (unit 21 a, unit 21 b),
 department 3 (unit 31),
 department 4:
 Friedrich-Ebert-Strasse 14
 67433 Neustadt an der Weinstrasse;
 department 2 (unit 23):
 Karl-Helfferich-Strasse 2
 67433 Neustadt an der Weinstrasse;
 department 3 (unit 34):
 Karl-Helfferich-Strasse 22
 67433 Neustadt an der Weinstrasse

location
Mainz:
 department 2 (unit 21 b):
 Kaiser-Friedrich-Strasse 7
 55116 Mainz;
 department 2 (unit 22):
 Kaiserstrasse 31
 55116 Mainz;
 department 3 (unit 33):
 Kleine Langgasse 3
 55116 Mainz;
 unit 41 (standing conference of local planning authorities):
 Ernst-Ludwig-Strasse 2
 55116 Mainz

location
Kaiserslautern:
 department 3 (unit 32):
 Fischerstrasse 12
 67655 Kaiserslautern;
 unit 41 (standing conference of local planning authorities):
 Bahnhofstrasse 1
 67655 Kaiserslautern

location
Speyer:
 department 3 (unit 34 - dyke maintenance and flood control):
 Industriestrasse 70
 67346 Speyer

location
Budenheim:
 department 3 (unit 33 - dyke maintenance):
 Mainzer Strasse 100
 55257 Budenheim